

Bacteria 1

Klebsiella pneumoniae

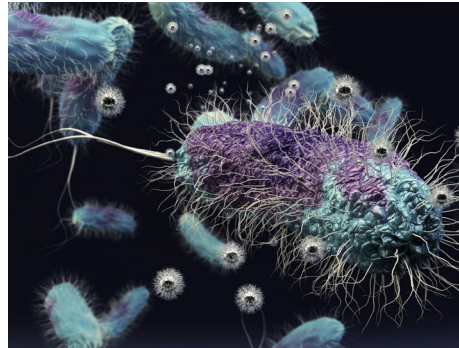


Facts:

- A human pathogen (causes disease)
- Often resistant to antibiotics
- Can sense how many of the bacteria are present (called quorum sensing)
- Can use quorum sensing to alter behaviour during infections to better survive

Bacteria 2

Shewanella oneidensis

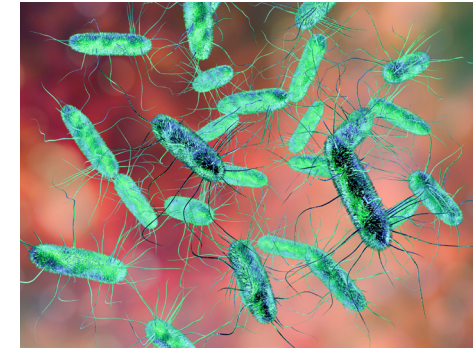


Facts:

- This bacteria do not cause human disease
- Adapted to live in soil and river sediments
- Often forms biofilms with other types of bacteria to survive
- Ability to generate electrical currents makes it useful for biotech and renewable energy

Bacteria 3

Salmonella typhi



Facts:

- A human pathogen (causes disease)
- A cause of food poisoning
- Injects proteins into host cells to damage them
- Uses tail-like structures (flagella) to move
- Has a number of systems that allows it to survive in and colonise the gut during infections